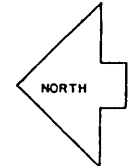
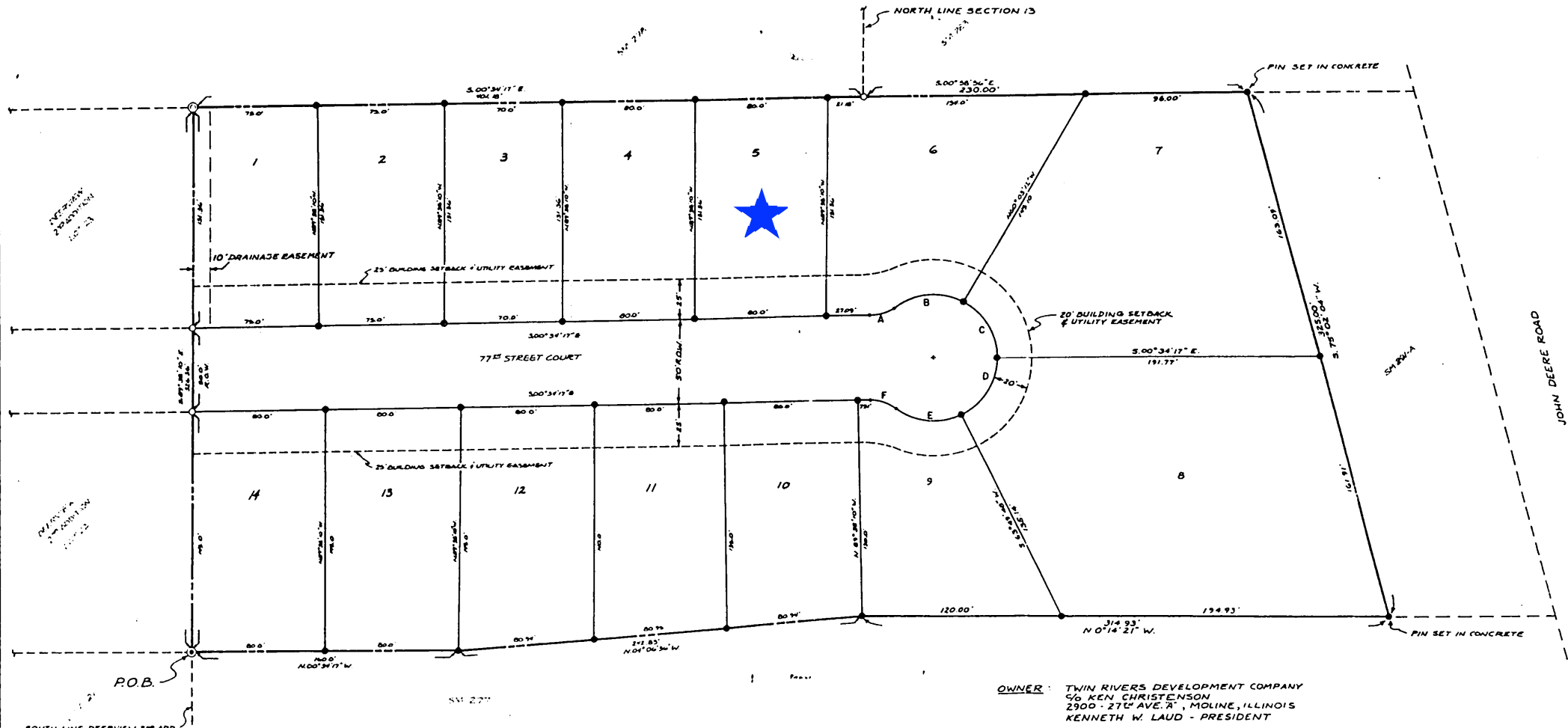
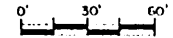


FINAL PLAT DEERVIEW THIRD ADDITION

PART OF THE S.E. 1/4, SECTION 12, & PART OF THE N.E. 1/4,
OF THE N.E. 1/4, SECTION 13, TWP. 17N., R. 1W., OF THE 4TH
P.M. CITY OF MOLINE, ROCK ISLAND COUNTY, ILLINOIS



SCALE: 1" = 30'



OWNER: TWIN RIVERS DEVELOPMENT COMPANY
50 KEN CHRISTENSON
2900 - 27th AVE. N., MOLINE, ILLINOIS
KENNETH W. LAUD - PRESIDENT

LEGEND

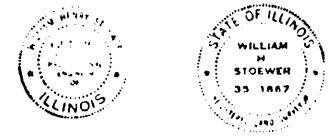
- CAPPED STEEL PIN PLACED BY STOEWER ENGINEERING (#1867)
- EXISTING STEEL PIN
- EXISTING STEEL PIN IN EXISTING CONCRETE
- CONCRETE PLACED AROUND EXISTING STEEL PIN

CUL-DE-SAC

CURVE	CHORD	BEARING
A	13.81'	S 19°00'28" E
B	41.41'	S 03°44'53" E
C	37.21'	S 59°41'09" W
D	39.97'	N 58°22'12" W
E	38.89'	N 05°04'28" E
F	15.81'	N 17°51'43" E

TO THE BEST OF OUR KNOWLEDGE AND BELIEF THE BEARINGS AND DISTANCES BOTH WITHIN AND AROUND THIS SUBDIVISION CONSTRUCTION WILL NOT BE CHANGED BY THE CONSTRUCTION OF SAME OR ANY PART THEREOF.

THE PROPERTY COVERED BY THIS PLAT IS NOT SITUATED WITHIN 500 FEET OF A SUBURBAN AREA AS DEFINED BY THE ILLINOIS TRIBUTARY AREA OF 240 ACRES OR MORE.



SIGNED: *William H. Stoewer*
WILLIAM H. STOEWER (I.L.S. #11867)
(P.S. # 13068)

SIGNED: *Kenneth W. Laud*
OWNER OR ATTORNEY

PREPARED BY:
STOEWER ENGINEERING
MOLINE, ILLINOIS

SCALE: 1" = 30'
DATE: AUG 22, 1984

W H S

DEERVIEW 3RD ADDITION
FINAL PLAT

6 A B

NO. 1937